



# Arthur W. Edwards Parent Information



**7:30 Health Screenings begin**  
**7:30 Doors Open to Students**  
**8:00 Morning Announcement**  
**3:00 Dismissal**

What will our new  
processes and day  
look like??



[Click Here to Watch Our Video](#)



**Breakfast and Lunch will be  
served daily in our classrooms!**

## **This week for Lunch:**

M - Pork BBQ or PBJ w/cheesestick  
T - General Tso Chicken or Ham Sandwich  
W - Meals may be picked up in front of the school  
Th - Oven roasted chicken or PBJ w/cheesestick  
F - Cheese Lasagna Rollup or Turkey Sub

We will not have A la Cart Items for sale!

**ALL Meals are Free of Charge!**

If you need School Nutrition information,  
[click this link.](#)

## **MASKS at School**



1. Students must arrive at the health screening with their mask on!
2. Make sure their mask fits well and covers their nose and chin.
3. Masks will be worn all day.
4. Students will have two 15 minute mask breaks outside daily.
5. Students will have a mask break during meals.
6. Please pack 2 extra masks in a ziplock baggie in your child's bookbag.
7. Your child will receive 6 masks on their first day at school! Look for them in their bookbags!

[Craven County Schools Mask Video](#)

# Bus Information



[Craven County Schhols Bus Procedure Video](#)

All students must be accompanied by an adult until their health screening has been completed at the bus stop. If they do not pass the health screening they will be asked to stay with their parent. They may participate in remote learning that day.

Please be patient with bus schedules as drivers and students adjust to the new processes.



For the most up to date bus information...Sign up for the [HERE COMES THE BUS APP](#)  
(this link will walk you through the process)

[Craven County Schools Transportation Department Information](#)

# Walker and Bike Rider Information

All students must be accompanied by an adult until their health screening has been completed at the gate. If they do not pass the health screening they will be asked to stay with their parent. They may participate in remote learning that day.



Parents will need to "Kiss and Go" at the gate once the screening is complete. Unfortunately, we will not be able to allow parents to enter the gate.



Staff will be on duty to greet your children. We have assigned staff all along the way to monitor and help children find their classrooms.

## Carpool Information



Students will be health screened to include a temp check prior to exiting your vehicle. If they do not pass the health screening, they will be asked to stay in the car. They may participate in remote learning that day.



Parents will need to stay in your car for AM and PM carpool.

## Afternoon Dismissal

We will begin dismissal at 3:00 with Westbrooke walkers. Then, buses, MCAS Base gate walkers and carpool will be dismissed.

**Walking Gate parents** will need to wait for your child **outside of the gate**. We are not allowed to have crowds congregating on our campus. Before you come to school, **MAKE A PLAN** with your children about where you will meet them.

**Carpool and Daycare Vans** will pick up in the main carpool lane at the front entrance of the school. When you arrive for the first day, we will give you a Name Placard that will need to be displayed in your car each day there after. A staff member will announce your car and your children will be directed to a numbered cone. You will pull to the cone, where a staff member will help to load your children. Please know that we cannot buckle seat belts, so practice with your children now. If your child can not buckle their own seat belt you will need to pull to a parking space so you will not delay the carpool line.

**Buses** will roll just as soon as they are loaded. Please remember K-2 students should have an adult waiting at the bus stop. 1st and 2nd student may submit a waiver for their child to walk home alone.

## Transportation Changes:

**BEST WAY!!** Send a note to your child's teacher at the start of the day if your child will go home an alternate way.

**GOOD WAY!!** If your child's transportation needs change during the day, you will need to call the front office at 444-5140. **These changes MUST be made by 2:30!**

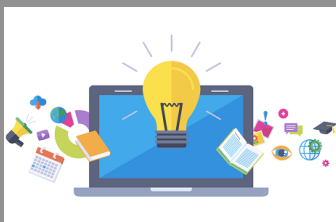
**NOT THE WAY!!** Teachers will not accept transportation changes by email, text or Remind messages.



School Supplies will be transported between school and home. The supplies you have been using for remote learning will be the same supplies your child will need at school.

## School Supply List

(Click Link for the supply list)



## TECH News

1. iPads will travel to and from school.
2. iPads need to be **charged nightly**, so they will last the whole school day!
3. Google Classroom will continue to be our Learning Management System.
4. REMIND will continue to be our communication system. (Except for Transportation Changes)

## A Water Bottle is Welcome!



Please send a filled water bottle for your child. Students will not be allowed to drink from the water fountains. They may fill their water bottles if needed!





Craven County Schools  
Return to School Safety  
Video

Craven County Schools  
3 W's Video



NC Department of Human  
Health Powerpoint